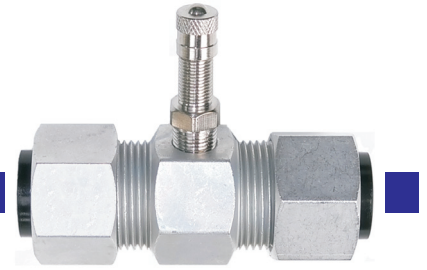


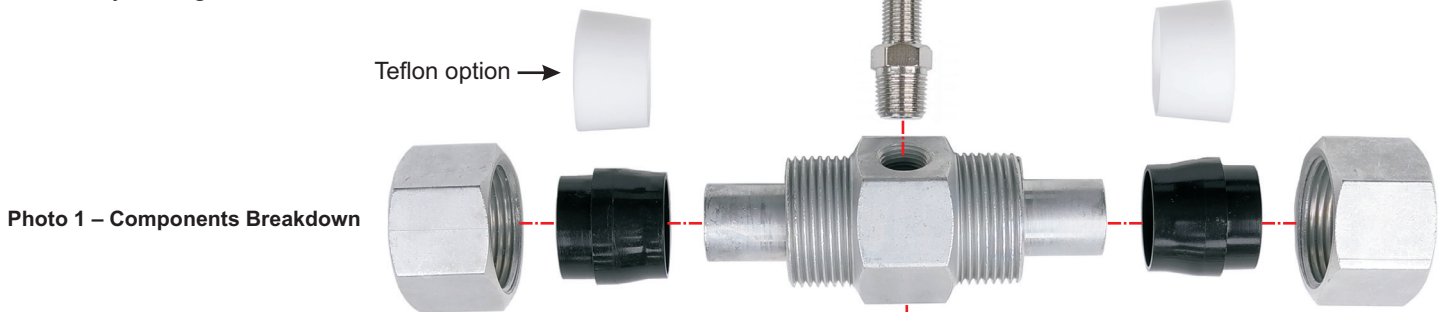
## System Studies Incorporated

# 1/2" Air Pipe Coupler with Tank Valve

9800-3057



The 1/2" air pipe coupler fitting is used to connect two lengths of CA 3131 air pipe. It is constructed of nickel-plated brass and equipped with air pipe coupler components on each end. The center hex section of the fitting includes female threads for inserting a ground lug connector and a standard tank valve. Both items are supplied but not installed. Refer to **Photo 1** for assembly configuration.



Each end-coupler connection includes a 1" NPT-F nut and a 3/4" I.D. black plastic ferrule which, when removed, exposes a 9/16" O.D. connection tube. Both the nut and the ferrule need to be slipped over the free end of the air pipe before the fitting's connection tube is inserted into the pipe. Please note that the fitting is also supplied with two separate Teflon ferrules, which are recommended for use on slightly larger-diameter 1/2" air pipe when it is difficult or impossible to use the more rigid, black ferrules included in the coupler connection. **Photo 2** shows the proper method of installing the ferrule and connector nut component on CA 3131 air pipe prior to connecting it. If using the black ferrule, the tapered end also faces the fitting's male thread as shown in **Photo 1**.

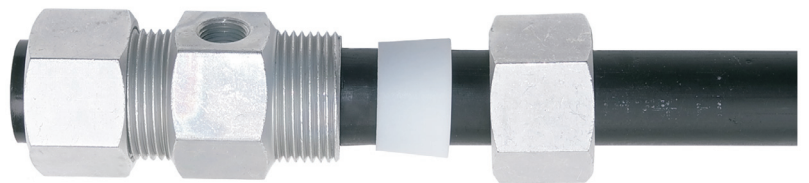


Photo 2 – Proper Placement of Components on Pipe

**Important:** When using the Teflon ferrule, make sure that the tapered end is inserted evenly into the circular space between the pipe sheath and the fitting's male thread (**Photo 3**). If any portion of the ferrule's circumference is not seated properly (**Photo 4**), the ferrule will be damaged when the nut is tightened and a leak may occur.

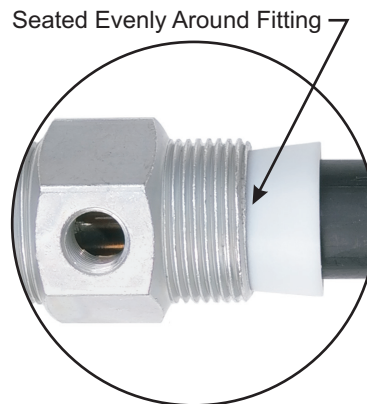


Photo 3 – Correct Ferrule Placement

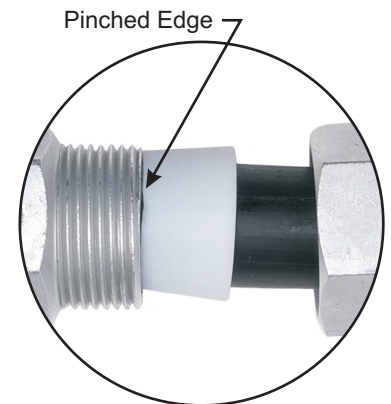


Photo 4 – Incorrect Ferrule Placement

## System Studies Incorporated



2-1340 East Cliff Drive  
Santa Cruz, CA 95062  
(831) 475-5777  
(800) 247-8255  
www.airtalk.com