

1/2" Air Pipe 3-Way Tee Fitting

9800-3001

The **1/2" Air Pipe 3-way Tee Fitting (Part No. 9800-3001)** is used when three sections of CA3131 air pipe need to be joined. The fitting consists of two coupler components: a 1/2" Air Pipe to 1/4" NPT-Male fitting and a standard 1/2" Air Pipe Coupler. These two components are constructed of nickel-plated brass for lasting durability in harsh manhole environments. Also included with the 1/2" Air Pipe 3-way Tee Fitting are two ground lug connectors and a 1/8" NPT-M hex head plug. If desired the plug can be replaced with a standard pressure test valve (not supplied) to provide the means of measuring pipe pressure at the three-way splice.

Each of the three end-coupler connections includes a 1" NPT-F nut and a 3/4" I.D. black plastic ferrule which, when removed, exposes a 9/16" O.D. connection tube (**Photo 1**). Both the nut and the ferrule need to be slipped over the free end of the air pipe before the fitting's connection tube is inserted into the pipe. Please note that the 3-way tee fitting is also supplied with three Teflon ferrules. These thinner, more pliable ferrules are recommended for use on slightly larger-diameter 1/2" air pipe when it is difficult or impossible to use the more rigid, black ferrules. **Photo 2** shows the proper method of installing the ferrule and connector nut component on CA 3131 air pipe prior to connecting it. If using the black ferrule, the tapered end also faces the fitting's male thread as shown in **Photo 1**.

Important: When using the Teflon ferrule, make sure that the tapered end is inserted evenly into the circular space between the pipe sheath and the fitting's male thread (**Photo 3**). If any portion of the ferrule's circumference is not seated properly (**Photo 4**), the ferrule will be damaged when the nut is tightened. Failure to properly seat the ferrule could result in a leak at the pipe connection.



2-1340 East Cliff Drive
Santa Cruz, CA 95062
(831) 475-5777
(800) 247-8255
www.airtalk.com

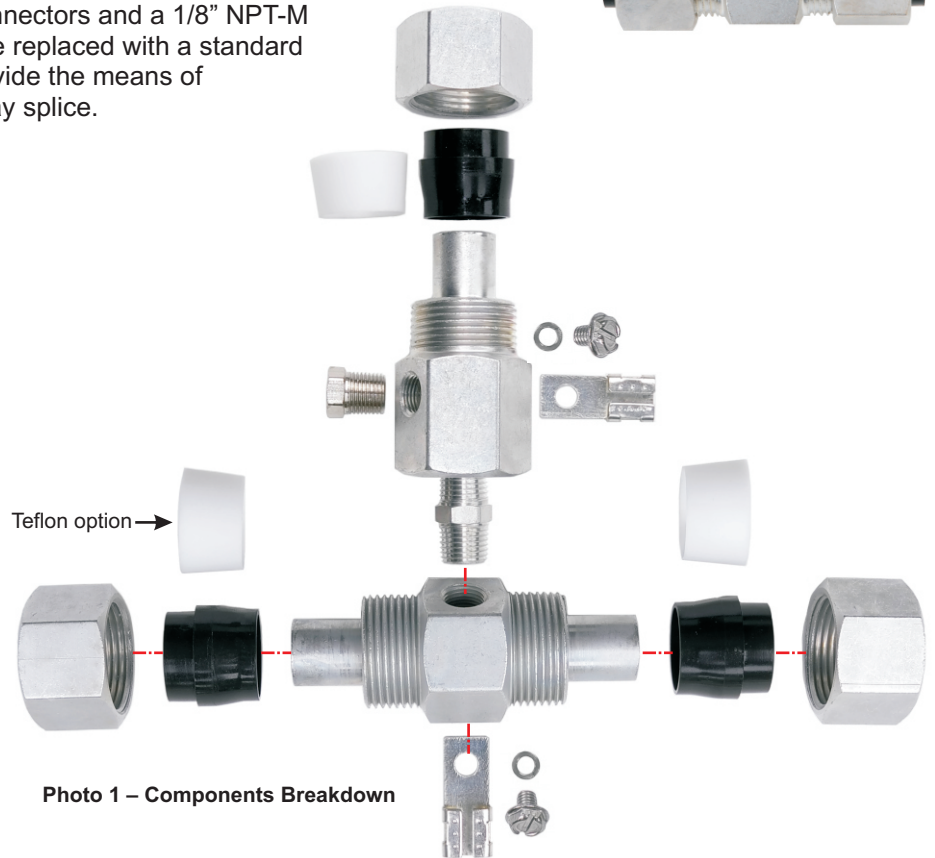
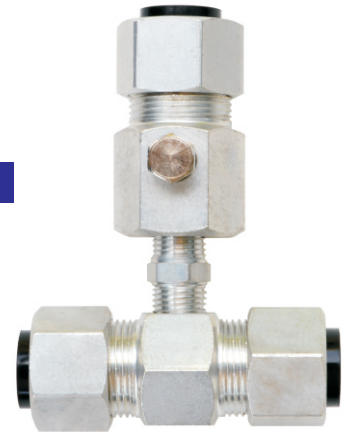


Photo 1 – Components Breakdown

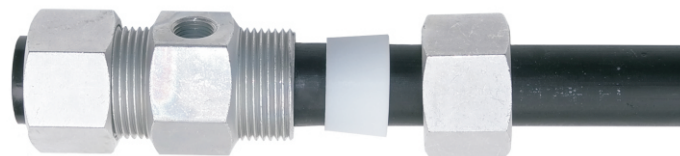


Photo 2 – Proper Placement of Components on Pipe

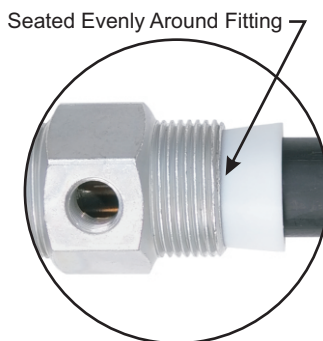


Photo 3 – Correct Ferrule Placement

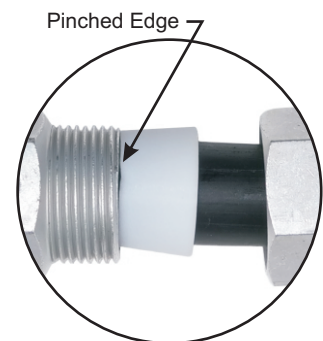


Photo 4 – Incorrect Ferrule Placement