

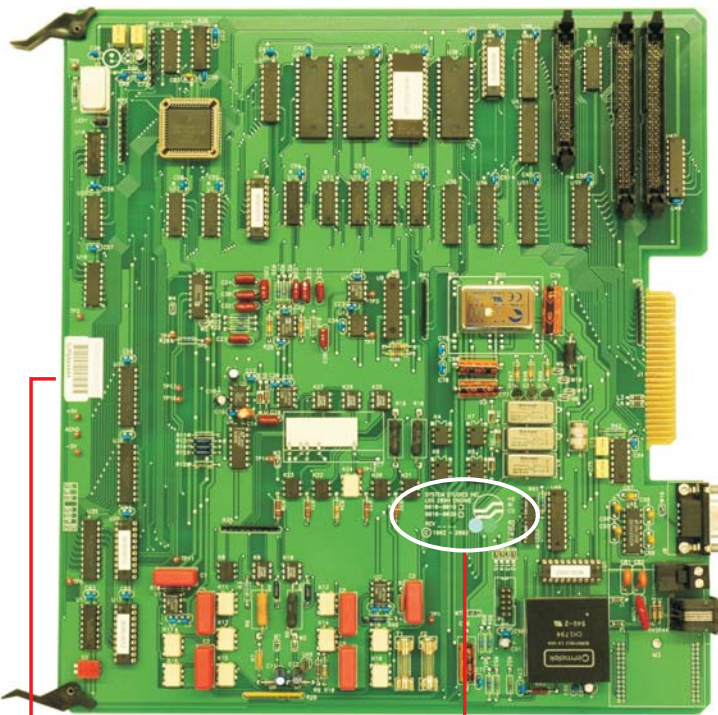
289H LSS Controller Card / Utility Card

Revision Designation & Serial Number Identification

In order to consider the return and repair of a 289H LSS Controller Card or Utility Card, it is important first to identify the card's revision designation and serial number. This information is located on two different areas of the card, as shown below.

The serial number includes the System Studies part designation, date and unique item identifier. The card revision designation provides equally valuable information for System Studies in determining if the card can be repaired. Please check the 289H LSS card for the required information and have it available when speaking with System Studies personnel regarding a possible return shipment.

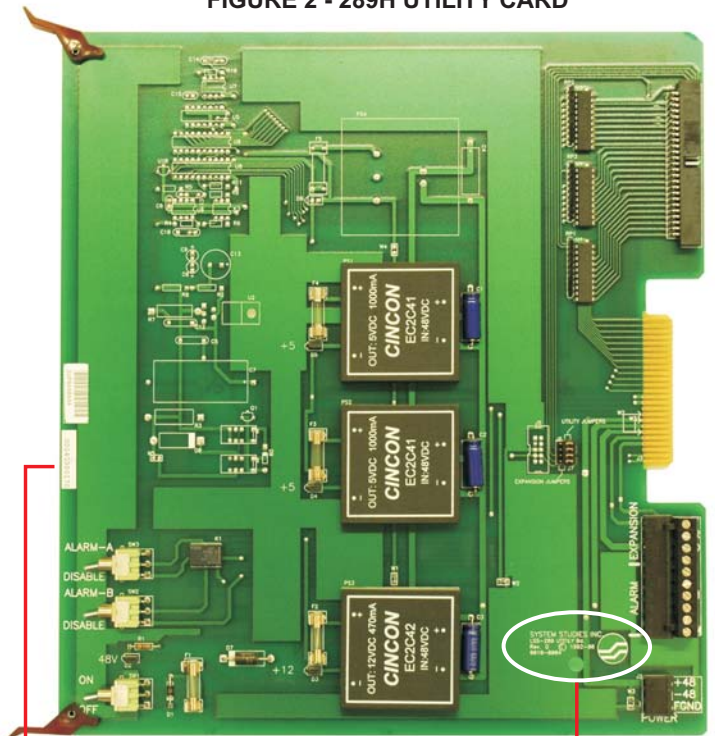
FIGURE 1 - LAN CONTROLLER CARD



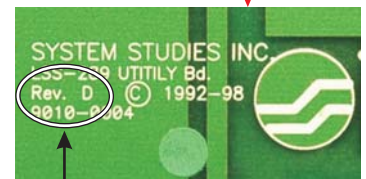
SERIAL NUMBER



FIGURE 2 - 289H UTILITY CARD



SERIAL NUMBER



CARD REVISION DESIGNATION

